

Florida Portfolio Surge Exposure

 St. Petersburg, Florida

Hundreds of properties. Elevation analyzed, surge modeled, and \$46M in exposure identified. In minutes, not days.

KEY CHALLENGES

What Surge Teams Face Today

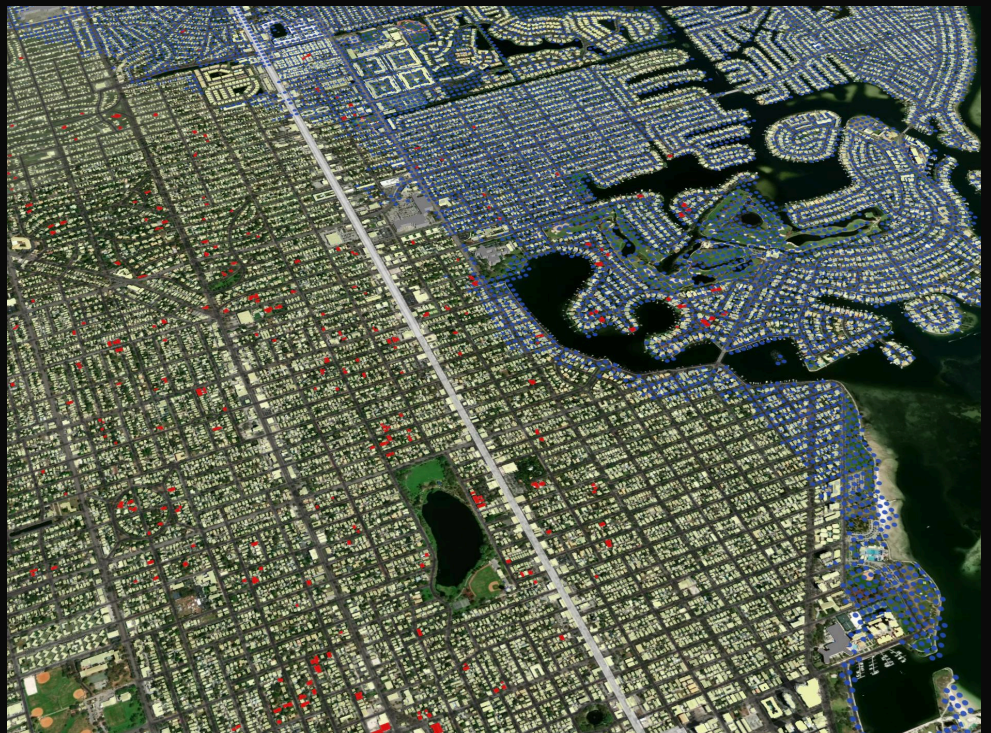
- ▶ Hurricane and surge exposure is tracked at the portfolio level, not the property level, leaving concentration risk hidden
- ▶ Elevation and flood hazard data live in separate systems, requiring manual assembly before any analysis can begin
- ▶ Quantifying combined insured value at risk from a specific surge scenario requires specialist tools and days of effort

Portfolio Surge Risk, Solved At The Property Level.

Coastal surge exposure is hard to quantify. Elevation data, flood hazard models, and insured property values live in disconnected systems, making portfolio-wide risk analysis slow and manual.

Neural Earth connects portfolio management, geospatial AI, and third-party hazard data in a single workspace.

Run spatial queries, identify vulnerable properties, and calculate total exposure automatically. In minutes, not days.



How It Works.

4-STEP WORKFLOW

1 Load: Portfolio Properties Mapped in 3D

Pull your Florida portfolio directly into Studio. Every building is precisely located on a 3D map, making coastal clusters and vulnerable assets immediately visible.

2 Analyze: Surface Low-Lying Exposure

Add an elevation layer to the map and analyze the distribution across the portfolio. About 200 properties sit below 4 meters above sea level, flagged automatically.

3 Model: Model Surge Scenario

Add a flood hazard layer from the data catalog and model a 1-meter surge event. Studio performs a spatial join between the portfolio and the hazard dataset, identifying 27 buildings that would be directly impacted.

4 Export: \$46M in Exposure

Studio calculates the combined insured value of impacted properties at \$46 million. Export the joined dataset including building attributes, elevation, and surge overlap for loss modeling, team sharing, or system integration.

WHAT NEURAL EARTH DELIVERS

Property-Level Surge Visibility.

Every asset precisely located in 3D and evaluated against real flood hazard data, not regional averages

Instant Exposure Quantification.

Spatial joins and insured value calculations run in seconds with no manual data wrangling.

Export-Ready Outputs.

Building attributes, elevation, and surge overlap packaged for downstream loss modeling, sharing, or system integration.

▶▶ **\$46 million in surge exposure identified across 27 properties in minutes.** ◀◀

Neural Earth Studio gives risk teams property-level coastal intelligence, on-demand hazard modeling, and export-ready outputs without leaving a single connected workspace.

✉ sales@neural.io